



**NAILCLMP- Nail Clamps**  
**RW List Prices - Page J-1**

**Pipe Clamps With Nail**



Part #	Description	Price
13405618	1/2 556-2 Half Clamp W/Nail	0.34
13405634	3/4 556-3 Half Clamp W/Nail	0.42
13499998	1 556-4 Half Clamp W/Nail	0.96
13405741	1/2 551-2 Full Clamp W/Nail	0.48
13405766	3/4 551-3 Full Clamp W/Nail	0.62

**Suspension Clamps**



Part #	Description	Price
01148310	1/2Nom 557-2 Suspension Clamp	0.80
01148311	3/4Nom 557-3 Suspension Clamp	0.70
01148312	1Nom 557-4 Suspension Clamp	1.34

**Twin Tube Talon**



Part #	Description	Price
13405650	1/2 - 3/4 555-23 CTS Twin Talon	0.46

**Touchdown Clamp**

- Clamps any pipe, conduit or wire from 3/8" O.D. to 1-1/8" O.D.
- Strong & U.V. resistant Nylon 66
- Variable tension slots for soft or firm clamping installations



Part #	Description	Price
03498920	550-11 Touchdown Clamp	1.38

**Copper J Hooks**



Part #	Description	Price
13405717	1/2 503-2 Copper J Hook	0.48
13405725	3/4 503-3 Copper J Hook	0.56

**Tube Nailer**



Part #	Description	Price
13405729	1/2 - 3/4 504-3 Tube Nailer	0.56

**Polyethylene Grommets**  
**Pipe Eye™ Metal Stud Insulator**

- Fits 1 11/32" holes in metal studs or brackets
- Split design. Offset hole for adjustable tube position
- Reduces expansion/contraction noise in hot water lines
- Fire retardant models meet UL94 V-2 fire rating
- Plenum safe models meet ASTM E84 25/50
- Flame/Smoke Spread and UL94 V-0 fire rating



558-M2R



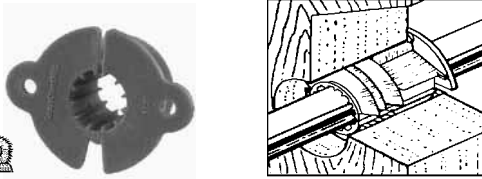
558-M3R

Part #	Description	Price
01148304	1/2 558-M2R 521-02R Poly Insert Grommet	0.82
01148303	3/4 558-M3R 521-03R Poly Insert Grommet	0.90

**GROMMET- Polyethylene Grommets**  
**Page J-2 - RW List Prices**

**Tube Insulators**

- Insulates tube in wood or metal studs
- Fits both 1-11/32" or 1-3/8" hole in metal or wood stud
- Split design allows for use after piping run
- Not for use on copper heat recirculating lines
- Ribs allow pipe to glide easier and more quietly when the pipe expands and contracts



Sioux Chief 

Part #	Description	Price
01148319	1/2Nom 558-2 Tube Insulator	1.08
01148324	3/4Nom 558-3 Tube Insulator	1.12

**CTS Tube Clamp**

- Split design fits any CTS piping- Copper, PEX, CPVC or PB



Sioux Chief 

Part #	Description	Price
13405735	1/2 559-2 CTS Tube Clamp	0.66
13405737	3/4 559-3 CTS Tube Clamp	0.70

**Pipe Strap**

Sioux Chief 



Part #	Description	Price
13404017	1/2 502-2 Two Hole Galv Pipe Strap	0.56
13404025	3/4 502-3 Two Hole Galv Pipe Strap	0.66
13404033	1 502-4 Two Hole Galv Pipe Strap	0.84
13404041	1-1/4 502-5 Two Hole Gav Pipe Strap	1.24
13404058	1-1/2 502-6 Two Hole Galv Pipe Strap	1.16
13404066	2 502-7 Two Hole Galv Pipe Strap	1.58
13404074	2-1/2 502-75 Two Hole Galv Pipe Strap	2.78
13404082	3 502-8 Two Hole Galv Pipe Strap	3.30
13404096	4 502-9 Two Hole Galv Pipe Strap	3.90
Part #	Description	Price
13404413	1/2 501-2 Two Hole Copper Pipe Strap	0.44
13404421	3/4 501-3 Two Hole Copper Pipe Strap	0.52
13404439	1 501-4 Two Hole Copper Pipe Strap	0.64
13404447	1-1/4 501-5 Two Hole Copper Pipe Strap	1.00
13404454	1-1/2 501-6 Two Hole Copper Pipe Strap	1.06
13404462	2 501-7 Two Hole Copper Pipe Strap	1.20

**Hangerstraps**

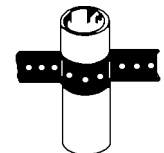
Sioux Chief 



Part #	Description	Price
13405949	3/4 524-10 24Ga Galv 10 Hangerstrap	3.38
13407507	3/4 524-50 24Ga Galv 50 Hangerstrap	14.90
13405923	3/4 524-100 24Ga Galv 100 Hangerstrap	26.10
Part #	Description	Price
13406111	3/4 524-10C 24Ga Copper 10 Hangerstrap	8.10

**Plasti-Pro Hanger Strap**

- Flexible non-conductive plastic strap
- 3/4" wide x .050 thick with 1/8" holes spaced 3/4" apart



Jones Stephens Corp.  
PlumBest

Part #	Description	Price
16400035	H21-100 Plastic 100 Hanger Strap	17.30



**PIPESTRP- Pipe Straps, Ties, Insullators**  
**RW List Prices - Page J-3**

**Versa-Link Clamps For 2 Pipes**

- Can be used with all kinds of pipe, including PEX,CPVC-CTS, and copper tube
- Secures and organizes pipe lines easily in both vertical and horizontal studs for a professional appearance
- Pre-loaded with nails or drill-point sheet metal screws
- Two-Pipe Clamp created to securely support hot and cold lines
- Easily accommodates an additional pipe-line with one Pipe Clamp, which snaps to the Two-Pipe Clamp

**Oatey**



Part #	Description	Price
03905020	33680 Oatey 1/2 Two Pipe Clamp W/Nail	1.70
03905025	33681 Oatey 1/2 Two Pipe Clamp W/Screw	1.98

**Versa-Link Clamps For 1 Pipe**

- Can be used with all kinds of pipe, including PEX,CPVC-CTS, and copper tube
- Secures and organizes pipe lines easily in both vertical and horizontal studs for a professional appearance
- Pre-loaded with nails or drill-point sheet metal screws
- Easily accommodates an additional pipe-line with one Pipe Clamp, which snaps to the Two-Pipe Clamp

**Oatey**



Part #	Description	Price
03905030	33682 Oatey 1/2 One Pipe Clamp	0.78

**Cable Ties - Natural Color Nylon**

- Adjustable and self-locking
- 4" Len-18 lb. tensile strength
- 8"-14" Len -75 lb. tensile strength
- Indoor Use Only



Part #	Description	Price
59201515	4in 40Pk Natural Nylon Cable Ties	6.38
59201520	8in 20Pk Natural Nylon Cable Ties	5.38
59201525	11.1in 12Pk Natural Nylon Cable Ties	6.38
59201530	14in 8Pk Natural Nylon Cable Ties	6.38

**Cable Ties - Black Color Nylon**

- High strength nylon cable tie
- Double-locking
- 75 lb. tensile strength
- Ultra-violet black
- Indoor/Outdoor Use-temperature range of -40 to 185 degrees



Part #	Description	Price
59201550	8in 15Pk Black Nylon Cable Ties	5.38
59201540	11in 8Pk Black Nylon Cable Ties	5.38
59201545	14in 8Pk Black Nylon Cable Ties	5.38

**Tie Wire - Black**

- 16-gauge wire



Part #	Description	Price
59201535	340ft 16 Ga Rebar Sq Tie Wire	9.30

**Tie Wire - Galv Copper Stainless**

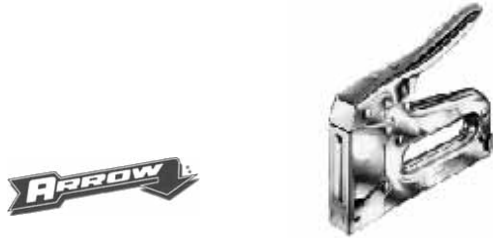


Part #	Description	Price
03501140	50ft 18Ga Galvanized Coiled Wire	7.30
03501150	25ft 18Ga Copper Coiled Wire	7.30
03501160	30ft 19Ga Stainless Coiled Wire	7.30

**STAPLES- Staples & Cable Ties**  
**Page J-4 - RW List Prices**

**Staple Gun**

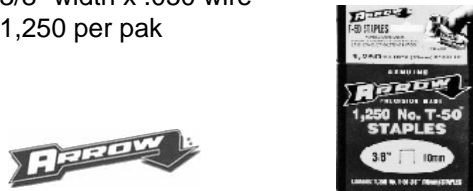
- All-purpose, heavy duty construction
- Easy-squeeze double leverage mechanism



Part #	Description	Price
59201500	T50P Staple Gun	56.50

**Staples - Arrow Straight Refills**

- 3/8" width x .050 wire
- 1,250 per pak



Part #	Description	Price
59201505	3/8 506T Box of 1250 Straight Staples	9.18

**Pipe Hooks**

**Pipe Hooks**



Part #	Description	Price
13405022	1/2 x 6 506-26 Plain Pipe Hook	0.64
13405071	3/4 x 6 506-36 Plain Pipe Hook	0.72
13405121	1 x 6 506-46 Plain Pipe Hook	0.76
13405154	1-1/4 x 6 506-56 Plain Pipe Hook	1.06
13405162	1-1/2 x 6 506-66 Plain Pipe Hook	1.18
Part #	Description	Price
13405220	1/2 x 6 506-26C Copper Pipe Hook	0.94
13405279	3/4 x 6 506-36C Copper Pipe Hook	1.00

**J-Hooks**

**J-Hooks DWV-With Nail**



Part #	Description	Price
01114560	1/2 553-2W White DWV J-Hook W/Nail	1.78
01114575	3/4 553-3W White DWV J-Hook W/Nail	1.98
01114580	1 553-4W White DWV J-Hook W/Nail	2.18
13405770	1-1/2 553-6W White DWV J-Hook W/Nail	2.38
13405777	2 553-7W White DWV J-Hook W/Nail	2.50
13405780	3 553-8W White DWV J-Hook W/Nail	2.78
13405789	4 553-9W White DWV J-Hook W/Nail	3.10

**Conduit Hangers**

**Conduit Hangers-Zinc Plated-H14**

- Includes Nut & Bolt

Jones Stephens Corp.  
PlumBest



Part #	Description	Price
33440800	1/2-3/8 H14-050 Zinc Plated Conduit Hanger	0.98
33440805	3/4 H14-075 Zinc Plated Conduit Hanger	1.10
33440808	1 H14-100 Zinc Plated Conduit Hanger	1.50
33440810	1-1/4 H14-125 Zinc Plated Conduit Hanger	1.90
33440812	1-1/2 H14-150 Zinc Plated Conduit Hanger	1.90
33440814	2 H14-200 Zinc Plated Conduit Hanger	2.18
33440816	2-1/2 H14-250 Zinc Plated Conduit Hanger	2.78
33440818	3 H14-300 Zinc Plated Conduit Hanger	3.10
33440822	4 H14-400 Zinc Plated Conduit Hanger	4.30

**Conduit Hangers-Copper Plated-H17**

Jones Stephens Corp.  
PlumBest



Part #	Description	Price
33440840	1/2-3/8 H17-050 Copper Plated Conduit Hanger	1.90
33440842	3/4 H17-075 Copper Plated Conduit Hanger	1.90
33440844	1 H17-100 Copper Plated Conduit Hanger	2.30
33440846	1-1/4 H17-125 Copper Plated Conduit Hanger	2.78
33440848	1-1/2 H17-150 Copper Plated Conduit Hanger	3.30
33440850	2 H17-200 Copper Plated Conduit Hanger	4.18
33440852	2-1/2 H17-250 Copper Plated Conduit Hanger	4.38
33440854	3 H17-300 Copper Plated Conduit Hanger	4.98
33440858	4 H17-400 Copper Plated Conduit Hanger	7.10



Since 1887  
Over 100 Years of Service

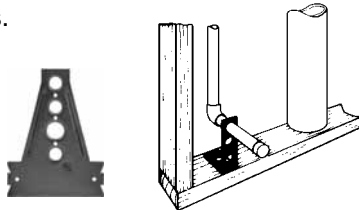
**Edge Bracket**



Part #	Description	Price
34972638	520-E16C Copper Stud Bracket	3.78

**Water Closet Bracket**

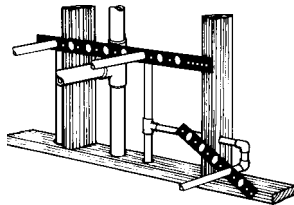
- Copper plated & will position 1/2" or 3/4" copper pipe.
- Designed for water closets or hose bibb connections.
- Two 1/2" holes: 1 is at 5-1/4" off the floor for standard toilets, the other is at 2-3/4" for low-boy toilets.
- The 3/4" hole in the center is for hose bibbs & other 3/4" piping needs.



Part #	Description	Price
13405820	521-6415 109-A Water Closet Bracket	5.50

**Brackets 521-118, 521-126**

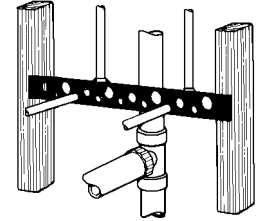
- Copper plated with 1/2" holes & 2" centers.
- Designed to position water supplies for sinks, lavs & other fixtures.
- Heat the pipe not the bracket.



Part #	Description	Price
13405800	1/2 x 20 521-118 Bracket	5.90
13405801	1/2 x 26 521-126 Bracket	8.90

**Bracket 521-810**

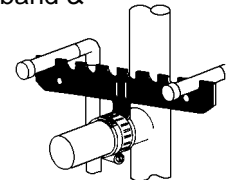
- Copper plated with holes on 2" centers to position 1/2" copper pipe & holes on 4" centers to position 3/4" & 1" copper pipe.
- Designed to position water supplies for lavs, water heaters, or any other fixtures where pipes vary in size from 1/2" to 1".



Part #	Description	Price
13405810	1-3/4 x 20 521-810 Bracket	7.70

**Posi-Fix 521-110 1/2**

- Copper plated & is available with 1/2" notches on 1" centers.
- It is designed to position water supplies for sinks, lavs & other fixtures.
- Pipes can be soldered directly to the #110-S to set 8", 6" & 4" centers.
- This bracket mounts directly to the horizontal or vertical waste pipe.
- Packaged with self-locking SS band & Self-adhesive isolating felt.



Part #	Description	Price
13405825	1/2 521-110 Posi-Fix Bracket	11.10

**BRACKET- Brackets**  
Page J-6 - RW List Prices

**Universal Slider Bracket**

Adjustable Pipe Bracket & Clamping System

- Use for 11" to 19" Openings
- Fastens any pipe from 1/4"OD to 1-1/8"OD
- 1 Bracket, 2 TD Clamps & 4 Screws

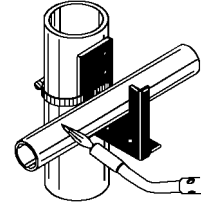


Sioux Chief

Part #	Description	Price
01148250	522-1624 USB Slider Bracket	8.78

**Horizontal Header Bracket - V2**

- Saddles horizontal water headers 1/2" to 3"
- Packaged with a 5" SS band and isolating felt
- Mounts to stack or wall



Sioux Chief

Part #	Description	Price
13405850	521-V2 Horiz Header Bracket	12.98

**Pipe Titan Bracket Kits**

- FR Pipe Titan plus 5 Kit
- 1 clamp & (1) 5" SS band



Sioux Chief

Part #	Description	Price
66406609	570-20 Pipe Titan +5 Bracket Kit	12.78

**Stakfix Bracket Kit**

- The versatile Stakfix mounts to metal struts, wood, pipe vents & stacks.
- Three mounting surfaces make Stakfix ideal for in-chase applications

**Load Capacity:**

- Outer End Point 125 lb.
- Center Point 202 lb.
- Innermost Point 357 lb.



**SUMNER**  
Manufacturing Co., Inc.

Part #	Description	Price
03498847	A-502 Stackfix Wf 7 SS Band	12.58

**Pipefix Bracket Kit**

- The Sumner Pipefix is the perfect solution to tight lavatory & sink rough-in situations.
- Like the Posifix, Pipefix is pre-slotted to hold & align 1/2" & 3/4" supply lines.
- Attaches to 1-3/8" to 6-5/8" OD vent or waste pipes.

**Load Capacity:**

- 4" Centers 782 lb.
- 6" Centers 185 lb.
- 8" Centers 145 lb.



**SUMNER**  
Manufacturing Co., Inc.

Part #	Description	Price
03498888	A503 Pipefix WF 7 SS Clamp	12.58

**Gridiron Bracket Kit**

- Fits inside a 2" x 4" wall when strapped to 2" pipe
- All four sides have strap slots and clamp holes.
- 6" & 8" centers are possible on all four sides.



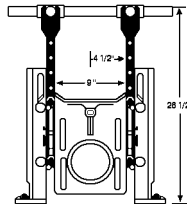
Sioux Chief

Part #	Description	Price
03498900	571-22 Grid Iron Bracket	11.98



**Carrier Upright Bracket-114-C**

- Copper plated steel bracket which has a 5/8" wide x 8-1/8" long slot for securely mounting upright to the carrier unit additional 5/8" holes are on 2" centers for various applications.
- It has a single 1-1/8" extruded hole at one end for soldering 1" copper pipe, to support the water pipe for the flush valve 26-1/2" above the floor & to offset the flush valve 4-1/2" from the carrier center.



Part #	Description	Price
13405835	521-726 114-C Carrier Upright Bracket	15.18

**Stainless Steel Bands**

- Stainless steel bands are used with Stakfix, Pipefix, & Channel for holding pipe & tubing to structural members.
- Bands can be used in a series for greater capacity.
- Attaches to 1-3/8" - 6-5/8" OD pipes



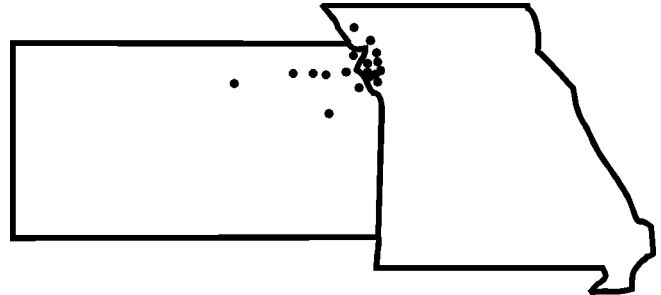
Part #	Description	Price
03498865	7 P-552 Stainless Steel Band	4.98

**Stud Shoe**

- 16 Gauge



Part #	Description	Price
01148400	533-1 Sioux Chief Single Stud Shoe	4.70
01148405	533-2 Sioux Chief Double Stud Shoe	5.30
01148410	533-3 Sioux Chief Triple Stud Shoe	6.30



**Conveniently Located  
In The Heart of America**

Emporia, Grandview, Independence,  
Junction City, KCMO-Downtown,  
KCMO-Midtown, KCMO-Waldo, Lawrence,  
Leavenworth, Lee's Summit, Lenexa, Liberty,  
Manhattan, Maryville, Olathe, Riverside,  
St. Joseph, Topeka



**BRACKET- Brackets**  
**Page J-8 - RW List Prices**

**Page Left Blank**

<i>Reeves-Wiedeman Company</i>								
Emporia, Ks	Grandview, Mo	Independence, Mo	KCMO-Downtown	KCMO-Midtown	KCMO-Waldo	Lawrence, Ks	Junction City, Ks	Leavenworth, Ks
Liberty, Mo	Lees Summit, Mo	Lenexa, Ks	Manhattan, Ks	Maryville, Mo	Olathe, Ks	Riverside, Mo	Saint Joseph, Mo	Topeka, Ks

**Shaded Items are Non-Stock**