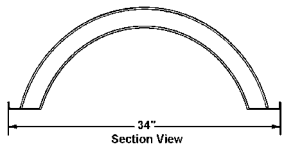




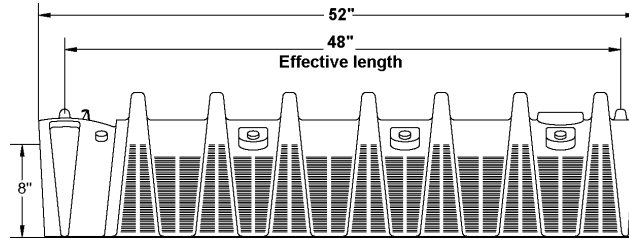
CHAMBER- Infiltrator Systems Chamber
RW List Prices - Page V-1

Quick4 Standard Chamber

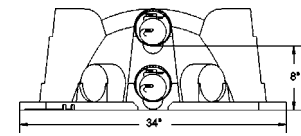
- Size - 34" x 52" x 12"



Quick4 Chamber - Front View



Quick4 Chamber - Side View



Quick4 Chamber - End Cap

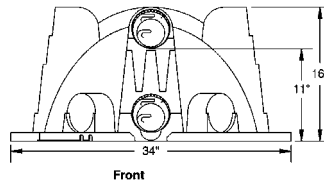
Part #	Description	Price
01696000	Q4STD Infiltrator Quick4 STD Chamber	47.10
01696050	Q4STDE Infiltrator Quick4 STD End Cap	27.18

Quick 4 High Capacity Chamber

- Size - 34" x 53" x 16"
- Storage Volume - 62 Gal



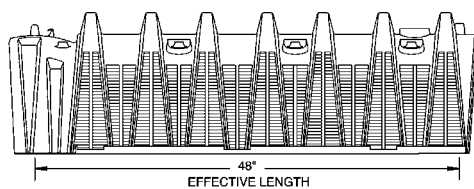
MULTIPOINT END CAP (Not to scale)



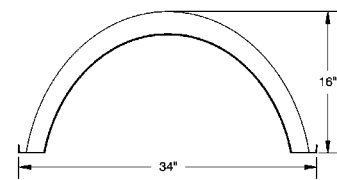
Front

Quick4 High Capacity Chambers

SIDE AND END VIEWS
(Not to scale)



EFFECTIVE LENGTH



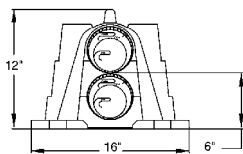
Part #	Description	Price
01690690	Q4HC Infiltrator Quick4 HC Chamber	54.70
01696095	Q4HCE Infiltrator Quick4 HC End Cap	27.18

Quick4 Equalizer 24 Chamber

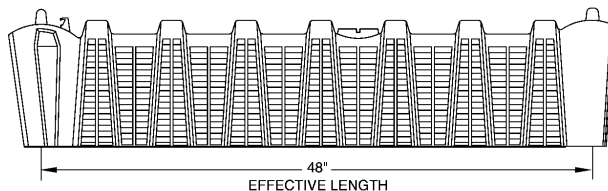
- Size - 16" x 53" x 11"
- Storage Volume - 20.4 Gal



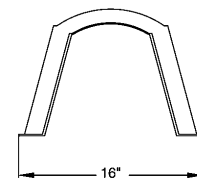
MULTIPOINT END CAP



SIDE AND END VIEWS



EFFECTIVE LENGTH



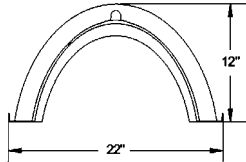
Part #	Description	Price
01696100	Q4EQ24 Infiltrator Quick4 EQ24 Chamber	25.78
01696105	Q4EQ24E Infiltrator Quick4 EQ24 End Cap	21.98

CHAMBER- Infiltrator Systems Chamber
Page V-2 - RW List Prices

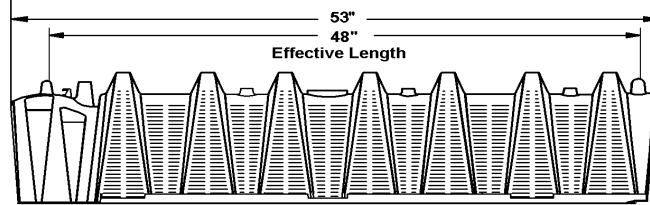
Quick4 Equalizer 36 Chamber

- Size - 22" x 53" x 12"

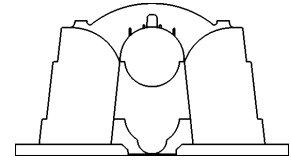
INFILTRATOR
SYSTEMS INC



Quick4 Equalizer 36 Chamber
- Front View



Quick4 Equalizer 36 Chamber - Side View



Quick4 Equalizer 36 Chamber
- End Cap

Part #	Description	Price
01696080	Q4EQ36 Infiltrator Quick4 EQ36 Chamber	36.58
01696085	Q4EQ36E Infiltrator Quick4 EQ36 End Cap	25.10

General Office:

Lenexa, Ks 66215-1114 14861 W. 100th St **Phone:** 913-492-7100 **Fax:** 913-492-6961

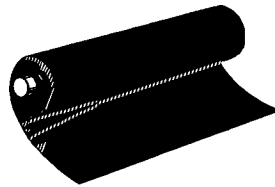
Branches

Emporia, Ks 66801	506 Funston St	Phone: 620-342-7121 Fax: 620-342-7122
Grandview, Mo 64030	13421 S 71 Highway	Phone: 816-763-5000 Fax: 816-763-3204
Independence, Mo 64055	4324 S Washington	Phone: 816-373-5510 Fax: 816-373-7959
Junction City, Ks 66441	813 N Perry	Phone: 785-238-1500 Fax: 785-238-6700
KCMO-Downtown, Mo 64106	1350 E 13 St	Phone: 816-221-2220 Fax: 816-471-0966
KCMO-Midtown, Mo 64111	3635 Main St	Phone: 816-531-4900 Fax: 816-756-5249
KCMO-Waldo, Mo 64114	8310 Wornall Rd	Phone: 816-822-7900 Fax: 816-361-5918
Lawrence, Ks 66047	2420 W 31st St	Phone: 785-841-5815 Fax: 785-841-5040
Leavenworth, Ks 66048	5101 S 13th St	Phone: 913-727-9000 Fax: 913-250-0048
Lees Summit, Mo 64081	1053 SE Broadway Dr	Phone: 816-246-1600 Fax: 816-246-1614
Lenexa, Ks 66215	14861 W 100th St	Phone: 913-492-7100 Fax: 913-492-6962
Liberty, Mo 64068	1051 S Brown St	Phone: 816-781-1204 Fax: 816-781-8124
Manhattan, Ks 66502	1100 Kretschmer Dr	Phone: 785-776-9271 Fax: 785-776-2123
Maryville, Mo 64468	2406 Burriss Rd	Phone: 660-562-2040 Fax: 660-562-3640
Olathe, Ks 66062	19952 W 162 St	Phone: 913-829-9090 Fax: 913-829-7474
Riverside, Mo 64150	4120 NW Riverside St	Phone: 816-741-4660 Fax: 816-741-0118
St. Joseph, Mo 64507	814 S 22nd St	Phone: 816-232-5469 Fax: 816-279-2610
Topeka, Ks 66604	1815 Western	Phone: 785-234-6627 Fax: 785-234-4294



CHAMBER- Infiltrator Systems Chamber
RW List Prices - Page V-3

Fabric Barriers

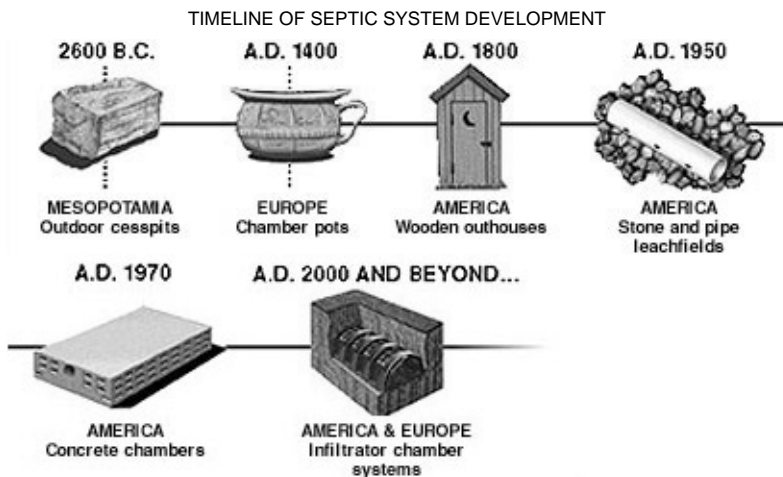


Part #	Description	Price
01696075	GEO040 500 SQ YD Reemay Style 2004 Filter Fabric-Priced per roll	398.00

Infiltrator Systems Inc. has revolutionized the onsite septic industry. What began in our Founder's own backyard as a great idea for a new leachfield drainage technology, is now a worldwide environmental solution for the onsite wastewater industry. Developed in 1987, our products improve the performance of onsite septic systems by delivering greater infiltrative capacity and long-term reliability. Our technology is based on fundamental principles of physics, soil science and geology and it offers performance advantages that have furthered the industry's goals of protecting public health, improving water quality and conserving precious natural resources.

Today, Infiltrator is a worldwide company with nearly 400 employees. With innovative products and services, ISO-9002 certified manufacturing facilities, creative recycling solutions and the development of new subsidiaries, Infiltrator is poised to offer a total approach to water quality. The future lies in a global effort to identify new technologies and to improve water quality and wastewater management worldwide.

We've taken wastewater management out of the stone age. Throughout the ages, mankind has shown fantastic ingenuity, as well as surprising disregard for public health, when it comes to managing water. The new millennium marks a heightened consciousness about the importance of reducing water consumption and safely reclaiming the water we use. After more than 4,000 years, it was time to invent a truly modern solution.



SEPTIC- Septic Tanks
Page V-4 - RW List Prices

NuConSept Low Profile Septic Tanks

- Parabolic design minimizes deformation by transferring load from the top to the sidewalls and bottom
- Rounded, aggressive rib design maximizes stiffness for long life
- Preplumbed with gasketed tees ready for installation with heavy duty Sch40 PVC tee assy
- Double Compartment model has structurally engineered divider permanently fused to walls



Part #	Description	Price
37000950	500 Gal Low Profile Septic Tank	1232.00
37010305	1050 Gal Dominator Low Profile Septic Tank	1908.00
37010100	1050 Gal Dominator Low Profile Double Comp Septic Tank	2104.00
37010310	1250 Gal Dominator Low Profile Double Comp Tank	2494.00
37010300	1500 Gal Dominator Low Profile Septic Tank	2726.00

Snyder Industries Inc.

Founded in 1957, Snyder Industries has grown to become a recognized leader in the design and manufacturing of plastic bulk storage, processing and transportation tank systems.

Our engineered bulk handling container solutions incorporate seamless, polyethylene tank constructions produced through the latest technologies within the rotational molding process.

Snyder Tanks are molded with a variety of polyethylene materials, including FDA and NSF 61 approved high-density (HDLPE) and cross-linked high-density (XLPE) resins.

Snyder Industries' tank engineering team is responsible for a multitude of poly tank processing and design patents, which are utilized to produce plastic tank solutions that exceed the safety and performance requirements of our customers at the lowest possible cost. In addition to our broad proprietary product line of poly tanks and containers, Snyder Industries is also a unique resource for select custom molding applications that require a high degree of engineering and manufacturing expertise within the rotational molding process to develop large durable plastic products.

NuConSept Sphere Septic Tanks



Part #	Description	Price
37010320	300 Gal Sphere Septic Tank	924.00
37010315	500 Gal Sphere Septic Tank	1232.00

Polylok Effluent Filter

- Gas Deflection/Shutoff Ball deflects TSS from entering Filter and stops flow of Unfiltered Effluent from entering the Field
- Connects to 4" or 3" PVC Sch 40 Pipe or 4" S&D/SDR-35 PVC Pipe



Part #	Description	Price
27086000	PL-122 Polylok Effluent Filter	90.10

Manhole Extension

- 12" High
- Can be stacked 3 high



Part #	Description	Price
37011000	12 x 24 Manhole Extension	142.90

The best people.
The best products.
The best prices.